



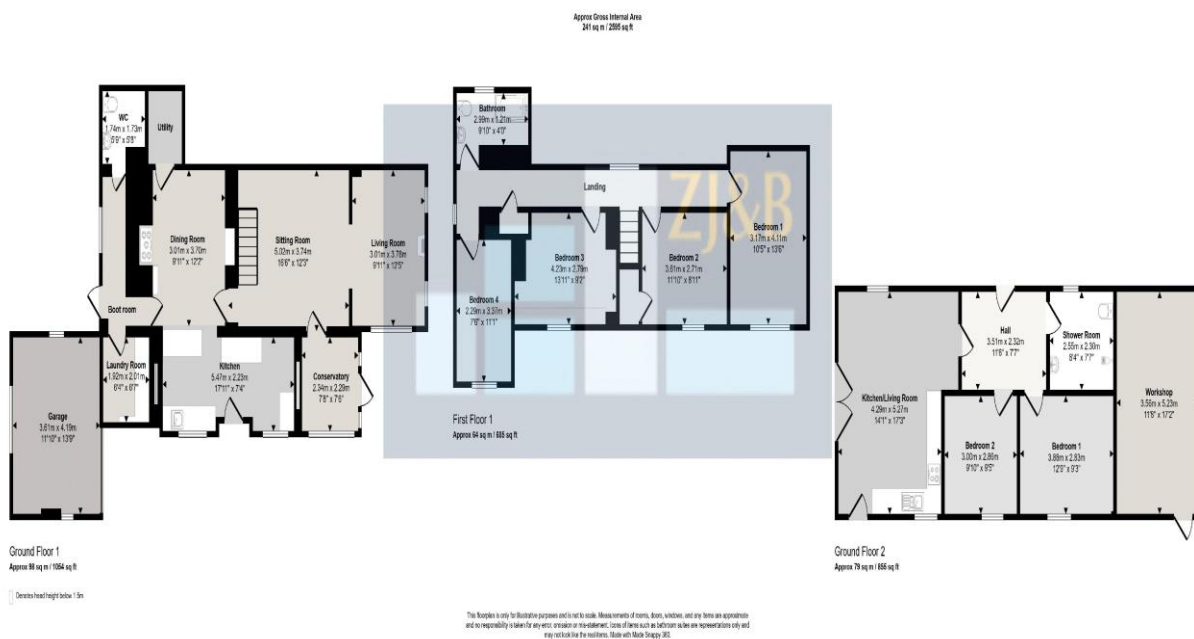
## 29 Snailbeach, Shrewsbury, Shropshire, SY5 0NS

### Offers in the Region Of £695,000

**A deceptively spacious and mature 4-bedroom detached cottage, enjoying outstanding elevated views.**



Zaza Johnson & Bath are delighted to be the chosen agents for the sale of this deceptively spacious and mature four-bedroom detached cottage, enjoying outstanding elevated views towards Bromlow and Rodney's Pillar. The property retains a wealth of character and original features, while offering well-proportioned and versatile accommodation throughout. The ground floor briefly comprises a modern kitchen, dining room, laundry room, boot room, WC, sitting room, living room, and conservatory, providing excellent space for both family living and entertaining. On the first floor are four bedrooms, three doubles and one single, together with a family bathroom. Outside, the property benefits from a garden enjoying beautiful views across open countryside, along with a large detached garage. In addition, the sale includes a spacious self-contained holiday let, of wood clad, block construction, which has been built with disabled people in mind, offering excellent potential for supplementary income or multi-generational living. The accommodation here provides a large kitchen/dining room, inner hall, 2 bedrooms and wet room. There is a spacious adjoining workshop/games room. The current owners have made informal enquiries to make it a stand alone residence which any new owner could pursue (subject to planning consent). This makes the property not only a wonderful family home, but also an attractive lifestyle or business acquisition for buyers seeking a home with established letting potential. Properties of this nature, combining character, space, views and income opportunity, are rarely available and early viewing is highly recommended.



**FLOOR PLANS FOR GUIDANCE ONLY**





# The Holiday Cottage

The spacious self-contained holiday let provides a large kitchen/dining room, inner hall, 2 bedrooms and wet room. Offering excellent potential for additional income or multi-generational living.





This is a copy of the title plan on 24 APR 2026 at 12:31:41. This copy does not take account of any application made after that time even if still pending in HM Land Registry when this copy was issued.

This copy is not an "Official Copy" of the title plan. An official copy of the title plan is admissible in evidence in a court to the same extent as the original. A person is entitled to be indemnified by the registrar if he or she suffers loss by reason of a mistake in an official copy. If you want to obtain an official copy, the HM Land Registry web site explains how to do this.

HM Land Registry endeavours to maintain high quality and scale accuracy of title plan images. The quality and accuracy of any print will depend on your printer, your computer and its print settings. This title plan shows the general position, not the exact line, of the boundaries. It may be subject to distortions in scale. Measurements scaled from this plan may not match measurements between the same points on the ground.

This title is dealt with by HM Land Registry, Telford Office.

## Council Tax Band C

**Tenure:** Our client advises us that the property is Freehold. Should you proceed with the purchase of the property, these details must be verified by your solicitor.

**NB:** The mention of any appliances and/or services within these sales particulars does not imply that they are in full and efficient working order.

**Viewing:** To arrange a viewing call in at our office or telephone **01743 248351**

### FREE MORTGAGE ADVICE

Whether you are a first-time buyer, moving home, buying as an investor or looking to save on your mortgage payments, you could benefit from some **free** no obligation mortgage advice.

Contact **Stephen Bath** of Bee Mortgages, who is based at our office

**01743 248351**

**Whole of Market** clear and relevant tailored to your individual needs and circumstances.

**Your home may be repossessed if you do not keep up repayments on your mortgage**